


## CERTIFICATE OF ANALYSIS

CoA I.D. 1416 Date issued: 24/02/2022

Client information	Service information
Contact person: Adrian Gemini	Date received: 22/02/2022
Contact details: hello@thecannasseurcafe.com	Packaging description:
Tested for: The Cannasseur Cafe	<b>Glass bottle</b>
Address: Western Cape	Test requests/comments: <b>Cannabinoids, Terpenes</b>

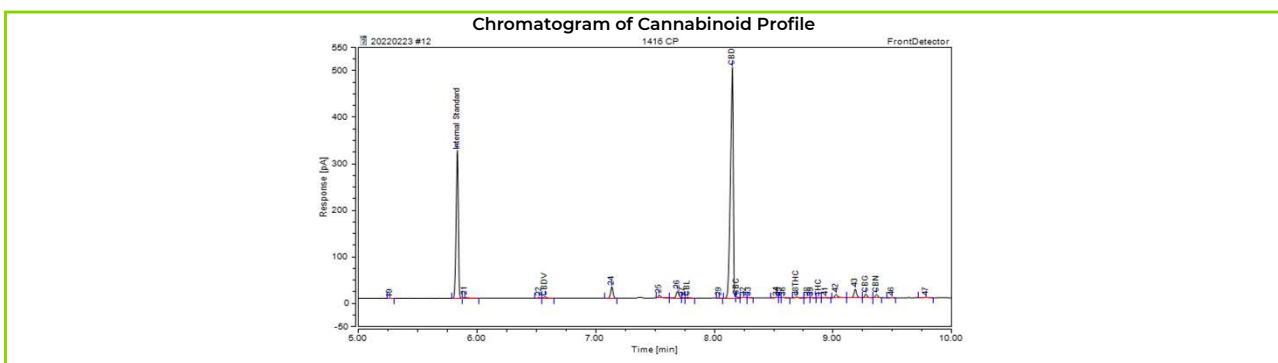
Sample Appearance	Sample information
	Client Reference: Entourage Immune
	Qure Reference: 1416 CPT
	Sample type: Oil
	Mass received incl. primary packaging (g): 38
	Batch #: Not specified

CANNABINOID PROFILE			
Cannabinoid	Result (mg/g)	Result (%)	Comment
CBDV	0.137	0.014	
THCV	0.000	0.000	
CBL	0.060	0.006	
Total CBD*	20.378	2.038	
CBC	0.108	0.011	
d8 THC	0.115	0.012	
Total THC*	0.033	0.003	
CBG	0.418	0.042	
CBN	0.305	0.031	
<b>Total Cannabinoids</b>	<b>21.553</b>	<b>2.155</b>	

Method reference: Q3

BM/2/177

Analysis date: 23/02/2022



\*Total CBD and Total THC are calculated as per after decarboxylation

CoA I.D.

1416

## TERPENE PROFILE

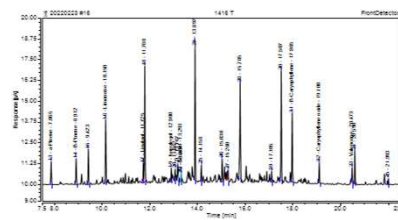
Terpene	Result (mg/g)	Result (%)	Comment
a-Pinene	0.097	0.010	
Camphene	0.000	0.000	
B-Pinene	0.117	0.012	
Myrcene	0.000	0.000	
a-Terpinene	0.000	0.000	
Cymene	0.000	0.000	
Limonene	0.261	0.026	
Eucalyptol	0.000	0.000	
a-Ocimene	0.000	0.000	
B-Ocimene	0.000	0.000	
g-Terpinene	0.000	0.000	
Terpinolene	0.000	0.000	
Linalool	0.079	0.008	
Isopulegol	0.062	0.006	
Borneol	0.022	0.002	
a-Terpineol	0.000	0.000	
Geraniol	0.000	0.000	
B-Caryophyllene	0.291	0.029	
Humulene	0.000	0.000	
Caryophyllene oxide	0.110	0.011	
Valencene	0.060	0.006	
a-Bisabolol	0.000	0.000	
<b>Total identified terpenes</b>	<b>1.099</b>	<b>0.110</b>	

Method reference: Q4

BM/2/177

Analysis date: 23/02/2022

Chromatogram of Terpene Profile



Final remarks:

**No acceptance criteria specified.**

Brenda Marx - Laboratory Director

*These results relate only to the sample indicated above and tested by Qure.*

*This report shall not be reproduced, except in full, without the approval of Qure.*

*Results apply to the sample as received by Qure.*

- End of report -